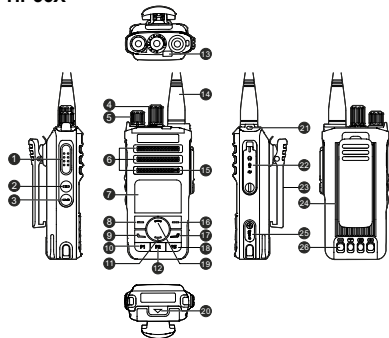
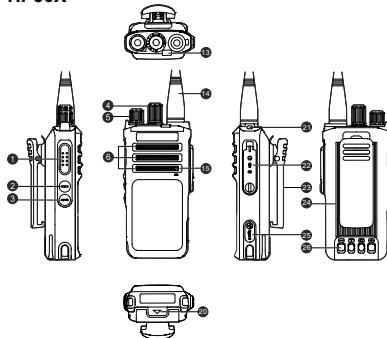


Product Layout

HP56X



HP50X



No.	Part Name	No.	Part Name	No.	Part Name	No.	Part Name
1	Push-to-Talk (PTT) Key	8	OK/Menu Key	15	Microphone	22	Accessory Connector
2	Side Key 1 (SK1) (Programmable)	9	P4 Key (Programmable)	16	Back Key	23	Belt Clip
3	Side Key 2 (SK2) (Programmable)	10	P1 Key (Programmable)	17	P5 Key (Programmable)	24	Battery
4	Channel Selector Knob	11	Down Key (Programmable)	18	P3 Key (Programmable)	25	USB Type-C Port
5	On-Off/Volume Knob	12	P2 Key (Programmable)	19	Up Key (Programmable)	26	Charging Contacts
6	Speaker	13	LED Indicator	20	Battery Latch		
7	LCD Display	14	Antenna	21	Strap Hole		

NOTE

- To assign features to programmable keys, contact your dealer.
- Figures in this guide are only for reference.

Basic Operations

Charge the Battery

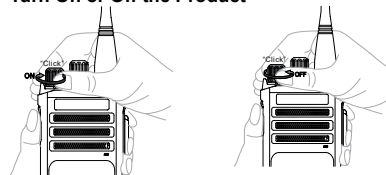
⚠ CAUTION

- Use the charger specified by the Company to charge the battery.
- Read the Safety Information Booklet before charging.
- The remaining lithium-ion battery power is limited to 30% pursuant to the new lithium battery shipment regulation approved by the International Air Transport Association (IATA).

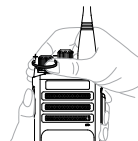
Before initial use, use the charger to charge the battery alone or the battery attached to the radio.

For details of the charging status, refer to the label at the bottom of the charger.

Turn On or Off the Product



Adjust the Volume



Select a Zone

Through the Programmable Key

Press the preprogrammed **Zone Up** or **Zone Down** key.

Through the Zone List (HP56X Only)

1. On the home screen, press the **Back** key.
2. Press the **Up** or **Down** key to select a zone, and then press the **OK/Menu** key.
3. Select **Set Default**, and then press the **OK/Menu** key.

Select a Channel

- Rotate the **Channel Selector** knob.
- Press the preprogrammed **Channel Up** or **Channel Down** key.

Status Indications

LCD Icons (HP56X Only)

LCD Icon	Radio Status
	More bars indicate more remaining battery power.
	The battery is low.
	The radio detects no signal.
	More bars indicate stronger signal.
	The radio works in low power mode.
	The radio works in high power mode.
	Location is enabled, but no valid position data has been received.
	Location is enabled, and valid position data has been received.

	BT is enabled.
	The radio is connected to a BT device.
	The radio is scanning.
	The radio is in emergency mode.

For more LCD icons, refer to the relevant User Manual.

LED Indicator

LED Indicator	Radio Status
Flashes green	The radio is being turned on.
Glow green	The radio is receiving.
Glow red	The radio is transmitting.
Flashes orange slowly	The radio is scanning or roaming.
Flashes orange quickly	The radio is in emergency mode.
Glow orange	<ul style="list-style-type: none">• Digital mode: The radio is in the call hang time. In this case, no voice is being transmitted or received during a call. Within such a period, you can press and hold the PTT key and speak.• Analog mode: The radio is in the auto reset time.
Flashes blue	Every 3s BT is enabled, but the radio is not connected to any BT device.
	Every 1.5s A BT device is connected.
	Every 0.1s BT is being disabled.

Call Services

To ensure optimal voice quality on the receiving radio, keep the microphone 2.5 cm to 5 cm from your mouth during speaking.

Call on a Digital Channel

Through the Preset Contact

1. Select a digital channel.
2. Press and hold the **PTT** key.

Through the Contact List (HP56X Only)

1. On the home screen, go to **Menu > Contact** to select a contact.
2. Press and hold the **PTT** key.

Call on an Analog Channel

Call Without Signalling

1. Select an analog channel.
2. Press and hold the **PTT** key.

Call with Signalling

- Press the **PTT** key.
- Press the preprogrammed **One Touch Call** key.
- (HP56X Only) On the home screen, go to **Menu > Contact** to select a contact, and then press the **PTT** key.

Emergency Call

The Emergency feature is configured and enabled by your dealer. For details, refer to the User Manual.

For details, please visit our website at: <https://www.hytera.com/en/download-center.html>, or scan the QR code to download the relevant User Manual.



HP56X



HP50X



is the trademark or registered trademark of Hytera Communications Corporation Limited.

© 2022 Hytera Communications Corporation Limited. All Rights Reserved.

Address: Hytera Tower, Hi-Tech Industrial Park North, 9108# Beihuan Road, Nanshan District, Shenzhen, People's Republic of China

Postcode: 518057

<https://www.hytera.com>

5202010081369A