

Hytera

**P** **XRUGGED**  
**PNC460** **SMART DEVICE**

DESIGNED FOR WORK EFFICIENCY





Hytera PNC460 is built to improve efficiency in the workplace today and tomorrow. It has both smartphone and push-to-talk over cellular (PoC) radio capabilities, empowering your team to connect and collaborate more seamlessly at work. Moreover, the PNC460 is truly rugged to brave any harsh environments. Where there is tough work, there is the PNC460.

Powered by the Android 12, the PNC460 allows you to use countless apps to get things done in less time and with less hassle. Beyond data-rich services, it also provides reliable PTT communications, from instant PoC calls to video-based dispatch. All is born to drive efficiency for professionals in logistics, transportation, electricity, and more.





# READY FOR EFFICIENCY



**Android 12 OS**  
**Simplify your workday**

With the Android 12 OS, the PNC460 delivers the familiar experience and ease of use that the professionals want. More importantly, it provides an open and inclusive platform to run a wide variety of key apps, making everyday tasks easier and faster.



**Hytera-developed Toolkit**  
**Help you work better**

With versatile ready-to-use Hytera-developed tools such as high beam, noise meter, gradienter, altimeter, plumb, pedometer, and protractor, the PNC460 lets you work efficiently and effortlessly.







## Exceptional Durability Withstand the tough conditions

The PNC460 is perfect for professionals working in the most demanding environments. It has tough exteriors and reinforced components to survive dust, water, snow, 1.5-meter sudden drops, extreme temperatures ( $-20^{\circ}\text{C}$  to  $+60^{\circ}\text{C}$ ), and more.



## Large HD Screen View more. Do more.

As a good assistant, the PNC460 helps you work more efficiently. The stunning 5-inch screen gives you plenty of space to use multiple apps at work. Additionally, this screen is sunlight readable and sensitive enough to react the touch of gloved hands and wet fingers.



## Precise Positioning Pinpoint your device and personnel

Thanks to the built-in dual-frequency GPS (L1+L5) chip, the PNC460 provides real-time, precise location for the dispatcher with the accuracy improved to 2 meters. Know where your devices are. Keep your personnel safe.



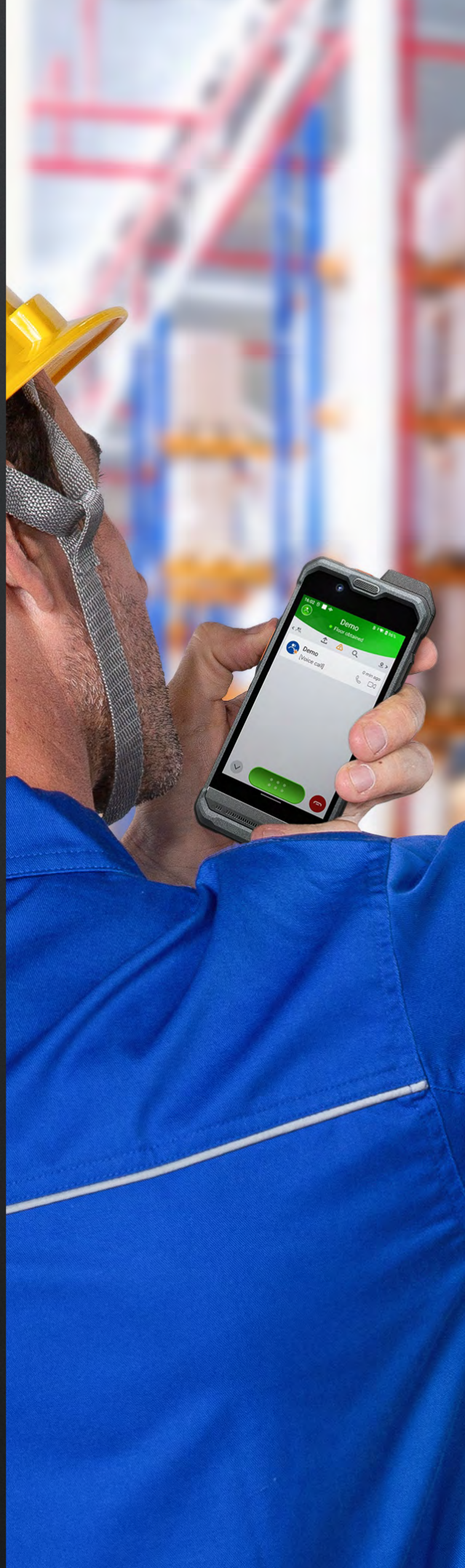


# READY FOR CRITICAL COMMUNICATIONS



**Push-to-Talk**  
**Stay connected anywhere, anytime**

With the Hytera HyTalk Pro app, the PNC460 can communicate with PDT, DMR, or TETRA radio over the 2G, 3G, LTE, or WLAN network. It delivers instant one-to-one or one-to-group communications anywhere in the world once you press down the large and tactile PTT key. This ensures flow of information at all time, even during the most critical circumstances.







## Professional Acoustic System Deliver loud and clear audio

With the powerful speaker and sophisticated noise cancellation technologies, the PNC460 delivers crystal-clear audio in any noisy environment such as electrical maintenance field, port, and factory. This best-in-class audio promises a high-quality communication experience in any work environments.

### Boosted Loudness

- 3-watt ultra linear dual-speaker

### Maximized Clarity

- AI-based noise cancellation
- Wind noise cancellation
- Echo reduction
- Feedback howling reduction



## External Antenna Make communications smoother and more stable

Unlike the radios with the built-in antenna, the PNC460 comes with the external antenna that has a 70% higher RX capability. So even in the area with weak signal strength such as mountain and underground garage, the PNC460 still conveys accurate information without missing any words.



## Powerful Camera System Improve situational awareness

The PNC460 has unmatched photography capabilities, thanks to a 50 MP rear camera HDR technology, and image stabilization algorithm. It can capture clear pictures and stable live videos in the field, and feed them to the command center in real time over the LTE or WLAN network. This is invaluable for dispatcher to know what happened, significantly improving collaboration and outcomes.





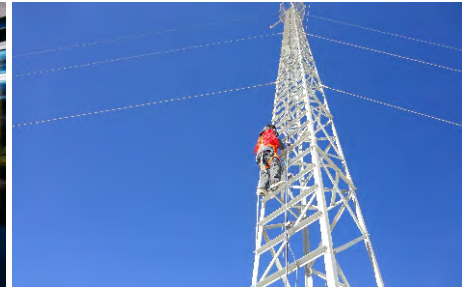
## Application Scenarios



Industrial Park



Transportation



Electricity



Customs



Airport



Logistics

## Specifications

Frequency Range	GSM: 900/1800 WCDMA: B1/B3/B8 TDD-LTE: B34/B38/B40 FDD-LTE: B1/B3/B7/B8/B20/B28
Operating System	Android 12
Storage	4 GB RAM + 64 GB ROM
TF Card	128 GB (max.)
Dimensions (L × W × D)	164 mm × 77 mm × 14 mm
Weight	275 g
Screen Size	5.0 inches
Screen Resolution	1920 × 1080
SIM Slots	2 × Nano-SIM
Location	GPS (L1&L5)/A-GPS/BDS/GLONASS/Galileo
Sensor	Acceleration/gyroscope/geomagnetic/opto-sensor
WLAN	2.4 GHz&5 GHz, 802.11 a/b/g/n/ac
BT	BT 5.0
NFC	Available
Interfaces	USB Type-C port 3.5 mm audio jack
Battery Capacity	4,500 mAh
Charging Interface	USB Type-C port
Speaker	3 W (max.)
Motor	Available
Cameras	Rear: 50 MP; Front: 8 MP
Video Resolution	1080p@60fps
Operating Temperature	-20°C to +60°C
Storage Temperature	-30°C to +70°C
	IEC 61000-4-2
Electro-Static Discharge (ESD)	±12 kV (air) ±6 kV (contact)
IP Rating	IP68
Drop Resistance	1.5 m

## Accessories

● Standard ● Optional



Battery



Power Cord



Power Adapter



Remote-mount Earset



BT Earpiece (with PTT)



Wireless Ring PTT



Wireless Remote Speaker Microphone



Charger



**Hytera Communications Canada**

Address: 100 Leek Crescent, Richmond Hill, ON L4B 3E6

**Tel:** 905 305 7545

**<https://www.hytera.ca>**

Hytera retains right to change the product design and specification. Should any printing mistake occur, Hytera doesn't bear relevant responsibility. Little difference between real product and product indicated by printing materials will occur by printing reason.

**HYT**, **Hytera** are registered trademarks of Hytera Communications Canada.  
© 2023 Hytera Communications Canada. All Rights Reserved.